

# Insulated Jacket Instructions

**Note:** Swap “ice” for a “heating pad” if you are using these instructions to heat the *FastFerment*.

## Making Ice

1. We suggest you use regular 2 litre soda bottles as they are strong and can be reused many times.
2. Fill the bottle with salt water (will stay frozen the longest), but leave roughly 3” of air space at the top of the bottle for expanding ice.
  - a. Failure to do this WILL result in your bottles bursting either in your freezer or in your cooler.
  - b. It typically takes at least 48 hours in a standard freezer to freeze 2 liters of water solid.
3. **How much ice do I need?**

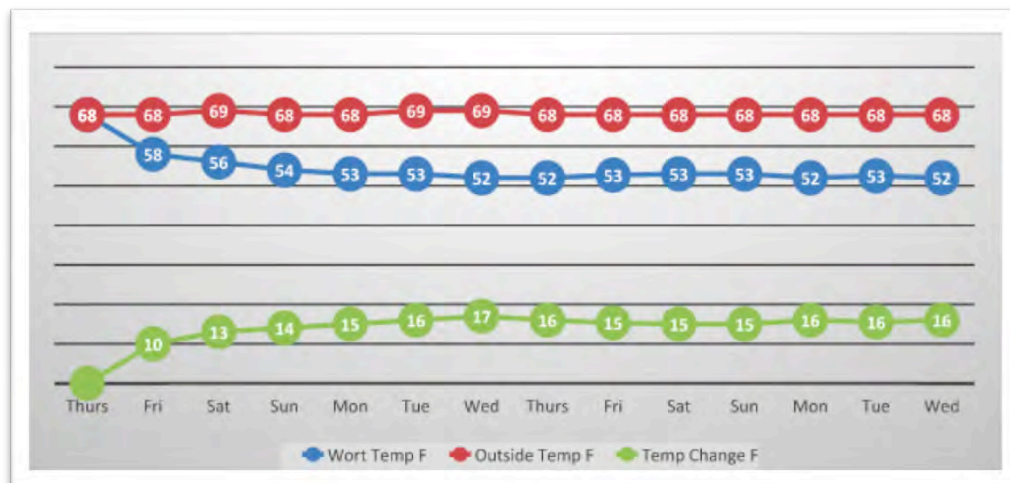


The TCJ works great up to 30°F drop below room temperature. See chart below for guidelines:

Temperature Drop	Frozen Ice Bottles Required
2.5° F drop	1 - 1 litre bottle
5° F drop	1 - 2 litre bottle
10° F drop	2 – 2 litre bottles
15° F drop	3 – 2 litre bottles
<b>This method is scalable up to around 30° F drop</b>	

\*A frozen 2-liter bottle typically does not thaw completely in 24 hours so it is easy to maintain a constant temperature drop.

**The following graph highlights a brew fermented at 53°F in a 68°F room. For this test, 3 frozen 2-liter bottles were cycled every 24-36 hours.**



## Using the *Wall Mounts*

1. FastFerments come with the correct *Wall Mounts* for using the *Insulated Jacket*, but if you have an original FastFerment the *Wall Mounts* do not have the pre-drilled holes and are not reinforced for the additional load of the ice. Purchase updated *Wall Mounts* from your retailer for \$19.99.

**\*Do not use wall mounts that do not have predrilled holes**

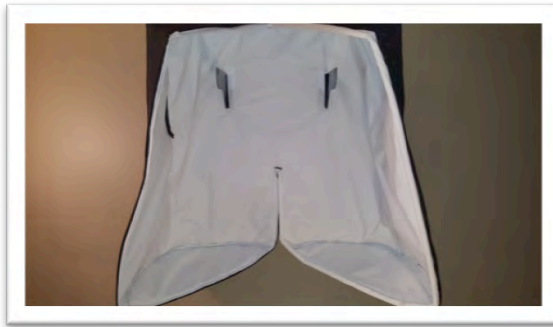
2. Mount two *Wall Mounts* and two Velcro patches to the wall as normal, only sandwich a Velcro patch centered behind each *Wall Mount*.

- a. The Velcro should show all the way around the *Wall Mount* and face the room.

**Note:** It is best to try placing the *FastFerment* when empty, in the mounting slots so that they are as close together as allowable for the best fit. Plan ahead.



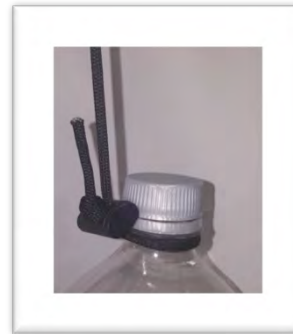
3. Hang the cooler pushing the *Wall Mounts* through the slits in the back. It will be a tight fit but firmly press the cooler around the *Wall Mounts* so the Velcro meshes together well.



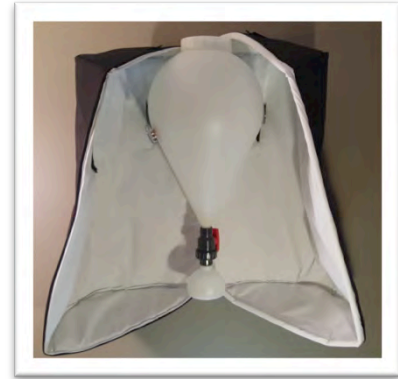
4. Install the "cord hangers" by pushing a cord through one of the *Wall Mount* holes in either direction all the way up to the supplied knot in the cord.

- a. Push the cord through a cord lock and then back through the same hole, creating a loop. Tie a second knot into the loose end of the cord about 1-2" from the end.

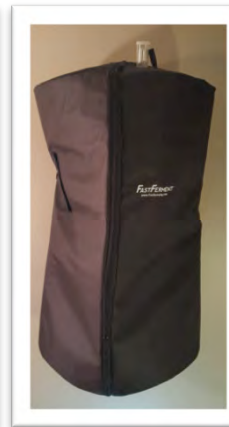
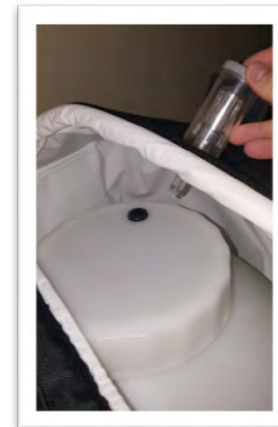
- b. Connect the frozen bottle around the neck or handle. Lower the bottle as low as it can go so it is tight against the second knot you just added.



5. Mount your *FastFerment* by hanging it from the *Wall Mounts* with the volume markings facing out. This allows the thermometer (optional accessory) to be viewed through the zipper on the side of the *Insulated Jacket*.



6. Push the airlock through whichever of the two top flaps that happens to be closest to the rubber grommet in the lid.
  - a. **Note:** Getting the airlock base wet with sanitizer and pushing in with a twisting motion help make this easier.
  - b. Zip up the *Insulated Jacket*.



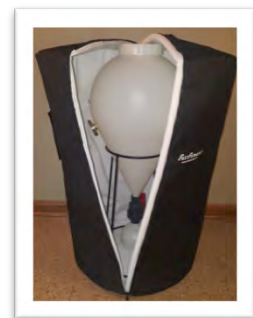
#### User Tips:

- Make sure you roughly have the same amount of weight on each bracket so the weight is distributed evenly.
- Zip up the rest of your zipper from front to back, leaving the zippers in front so they are easy to access.
- We suggest you place a towel on the floor below your cooler just in case there is condensation or your bottles leak.

## Using the *Stand*

1. When using the *Insulated Jacket* with a floor stand, start by zipping up the bottom of the cooler and place it on a level and sturdy surface. We suggest you place a towel inside the cooler to protect the bottom of the cooler from the steel ring on the stand and/or leaky bottles.
2. Place the *FastFerment* and *Stand* (not included) in the center of the *Insulated Jacket*.
  - a. Push the airlock through whichever of the two top flaps that happens to be closest to the rubber grommet in the lid.

**Note:** Getting the airlock base wet with sanitizer and pushing in with a twisting motion helps make this easier.



3. Make sure the two Velcro patches are attached to the back of the cooler to cover the slits.
4. Carefully add ice bottles to the bottom of the cooler.



5. Zip up the rest of your zipper from front to back, leaving the zippers in front so they are easy access.



**If you have any questions, contact us:**

**Info@FastBrewing.com**

**www.FastBrewing.com**

**Check out our full line of *FastFerment* accessories:**



Stand



Thermometer



Sample Port



Insulated Jacket



Extra Collection Ball



Carrying Strap

**FAST BREWING**  
& WineMaking