

R45 KETTLEVALVE™

Installation Instructions



1. You will first need to locate a suitable location for a valve hole. We find that 1¼ to 1½ inches up from the outside bottom of the pot is ideal for the center of the valve hole (drill 1½" up or higher if your pot has an aluminum-clad bottom) for most pots. Center this mark between the two handles. Use a tape measure to find this spot, and mark with a felt pen.

2. Now punch your hole mark with a hole punch and hammer, or phillips screwdriver and hammer if you do not have a punch. Make sure you make a small dent in the pot, so the drill bit will

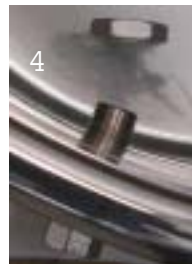
not walk when you start drilling.

3. **Important - you must wear eye protection when drilling the hole.** Using a 7/8" metal rated holesaw or step drill, start drilling, centering the tip of the drill on the dent you made in step 2. Make sure the pot is secured before drilling. Press firmly and hold the drill perfectly upright to make a clean hole. Once the hole is drilled, debur the hole by using a small file to remove any jagged pieces of stainless steel.



4. After drilling a suitable hole and cleaning up the rough edges with a file, install the valve. First put the orange O ring on the threaded back part of the valve so it fits into the provided groove.

Now put the threaded end of the valve into the hole, and install the backnut from the inside of the pot. Hand tighten only until very snug and you can see that the O ring is flattened against the outside of the pot (do not use a wrench).



5. The KettleValve is threaded ½" female NPT on the outside, to attach a 3/8" or ½" hose barb (recommended). On the inside, it is threaded 3/8" female NPT, to attach the Brewer's Edge R49 KettleScreen. The KettleScreen turns the pot into a mash tun, and can be used for straining whole hops from the boil (although pellet hops tend to clog the screen).

Tools Needed

Electric Drill
7/8" (22mm) metal rated holesaw or step drill
Metal Punch or phillips screwdriver
Hammer
Small File
Safety Glasses

BURN & SCALD DANGER!

When the pot is hot, opening the valve can cause burns and scalding. Make sure you take caution when opening the valve, to prevent personal injury.

Brewer's Edge® • San Leandro • CA 94577